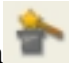


## Futura CE-250 Embroidery Demo

1. Open your Singer Futura Software by clicking on the desktop icon.
2. After reading the Tip of the Day, click Close.
3. Close the Welcome to Futura box by clicking on the red X.
4. Click Autopunch . The wizard will open.
5. Click Next.
6. On the Open image page, click Select. You should be in your C:/ Futura 3/ Images folder. These are the images that come with your Futura software.
7. Choose DECOR.wmf and click OK and then click Next.

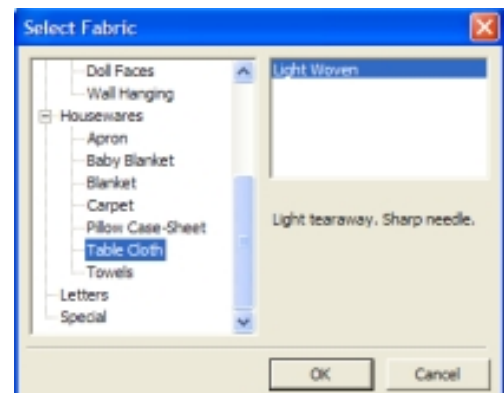


8. On the Crop Image page, you will notice a large area below the flowers that is selected. Only the flowers need to be selected, so click on the center black square at the bottom and drag the line up to just select the flowers. Then, click Next.
9. On the Set dimensions page – notice you can switch between cm, inches and mm – leave the size as is and click Next.



10. On the Color Reduction page, with Reduce Colors Automatically selected, click Suggest – the software will suggest the number of colors for this image. Seven colors are suggested. White – color number 1 is the background color which will not be stitched out.
11. Click color number 3 to select it.
12. Click Remove to remove color number 3.
13. To see the change in the design, click inside the box next to Preview color-reduction below the picture.
14. Click Next.
15. On the Classify Blocks page, change the stitch width to be about 3.6. This means whenever there's an area that is smaller than 3.6 – the stitches will be column (satin)stitches. If the area is larger than 3.6, they will be fill stitches. Then click Next.

16. On the Customize Stitch Blocks page, you can remove sections of the embroidery, change the order in which the design is stitched out and either eliminate the background color or stitch it out. Leave everything as is and click Next.
17. On the Embroidery Settings page, you can either manually set all the different choices for each section of the design, or you can select the fabric you will be stitching the design out on.

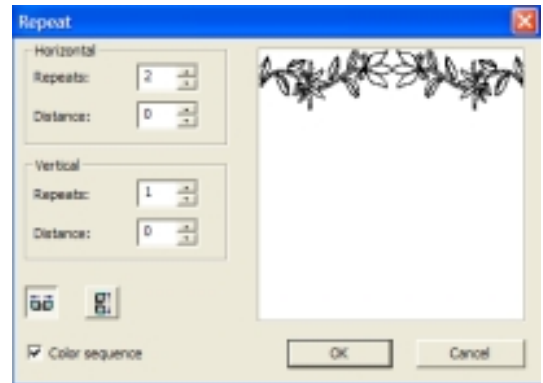


18. Under Selected Fabric, click Preset fabrics.
19. We will be stitching our flower out on a towel, but the towel is lightweight – almost like a tablecloth as opposed to a terrycloth towel, so choose tablecloth. Notice the stabilizer and needle is suggested to you!

20. Click OK. Then click Next.

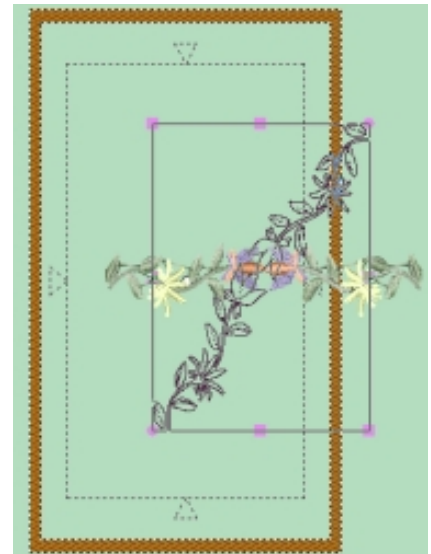
*On the Connection page, the choice is between a running stitch to connect areas of the design or Jump stitches to connect.*

21. Choose the Jump stitch and click Finish.
22. Click View and choose Realistic View to see the flower as thread – it looks great!
23. Click Design and then Repeat Design. The Repeat box will open.
24. In the Horizontal box, change the Repeats to 2 but leave the Distance at 0.
25. Leave the Vertical box at 1 and Distance at 0.
26. Choose the left option to mirror the flowers horizontally so the center flowers touch.
27. Place a check in the Color Sequence to eliminate double colors. Then click OK.
28. The message ‘You have gone outside the area of the selected hoop...’ will open.
29. Right click on the screen and choose Select design to move. The entire flower design will be selected.





*Notice the selection box around the flowers has both squares and circles at the corners and in the middle of the lines. Each box or circle does something different. Use the squares to stretch the designs in that direction, either making the design wider or thinner, taller or shorter. The circles are to rotate the design. We will rotate our flowers so they will fit within the hoop area.*


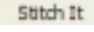
30. Move your mouse over a circle handle of the selection box. Notice your cursor becomes arrows in a circle.
31. Left click and drag the circle to rotate the flowers. Rotate the flowers to about a 45° angle then release your mouse.
32. Right click and choose Apply.
33. Again the message will appear telling you you have gone outside the area of the selected hoop. To remedy this problem, click Design, Center Design.




### Add lettering


34. Click Lettering  and the Lettering toolbar will open.
35. In the box on the far left, type ‘Futura.’
36. Choose Arial Large for the Font, and set the Height to 150. Leave the Spacing at 10. Justification will not matter because it is only one word.

37. For the Font Frame,  choose an option of your choice. Notice you can see the font on the screen. If you don't like the font frame you selected, choose a different one by clicking on the font frame on the lettering toolbar and selecting a different font frame.
38. Position the word Futura to your liking within the hoop.
39. When you are happy, right click and choose Stitch it, or click

 Stitch It  on the lettering toolbar.

40. Close the Lettering toolbar by clicking on Lettering .
41. Change the color of the last flowers and lettering by clicking on the last color clock in the Color Block List along the bottom of the screen.
42. Click the yellow color block at the top of the screen and then click on the color rainbow to select the new color. Then click OK.

You are ready to stitch out your design.

43. Click Transmit to machine .
44. Choose either Send design or Send block – and begin embroidering your design. Please consult pages 34 – 35 of your Futura Embroidery Software User's Manual – found under Help, Open the Manual... for more information on sending the design.

