
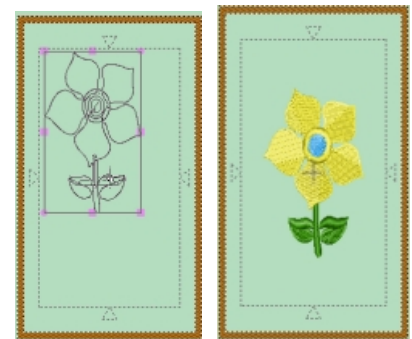
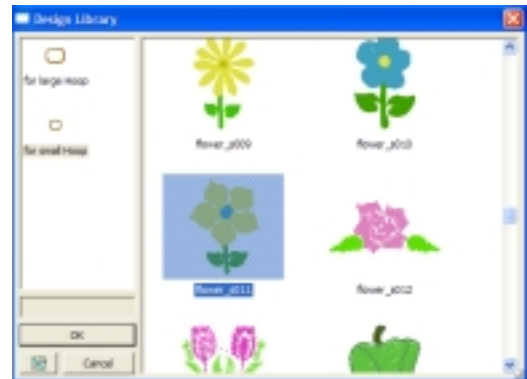





Futura CE-350 Embroidery Editing Features

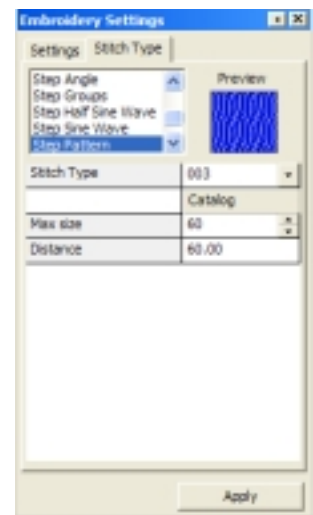
1. Open your Singer Futura Software by clicking on the desktop icon.
2. After reading the Tip of the Day, click Close.
3. The Welcome to Futura box will open.
4. Click on 'Open a design from Design Library' and the Design Library will open.
5. Select 'for Small Hoop' on the left, and then scroll down to find 'flower_s011.' It is a yellow flower with five petals.
6. Click the yellow flower, then click OK. The yellow flower will appear as an outline on the screen with a selection box around it.
7. To resize the flower, click and drag the left corner square of the selection box making the yellow flower reaches the top of the hoop section on screen as shown.
8. Right click, and click Apply and the flower will be resized on screen.
9. Click View and choose Realistic View to see the flower as thread – it looks great!
10. Click Design and then click Center Design to center the flower in the hoop.
11. Click Actual Size  to zoom in on the flower.



Notice with Futura CE-350 Software you now have a second toolbar which contains the editing tools.

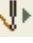

12. Click Outline Edit  then click on one of the petals of the flower. Boxes will appear around the outline of the petal.
13. Right click and choose Embroidery Settings. A small blue bar will open in the upper section of the work area.
14. Move your mouse over the blue bar for the Embroidery Settings and the menu will drop down.

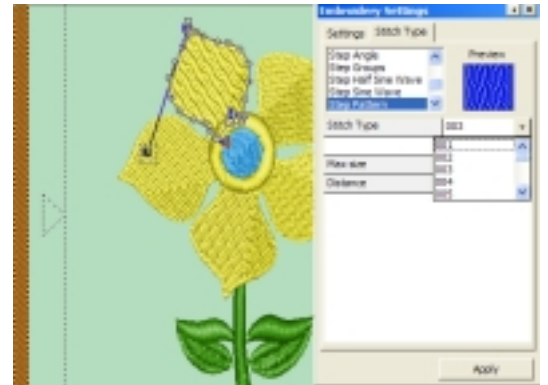
Here you can change the Density of this section of the design, the stitch angle by degrees, what type of Underlay the section has and if there is an outline, what color it should be. You can also change the Stretch % which is another word for Compensation.




15. Click the Stitch Type tab at the top. Step Satin is the current Stitch Type chosen.
16. Move the slider bar down and find Step Pattern.



17. With Step Pattern selected, click the drop-down arrow next to Stitch Type and choose a different pattern from the 100 available to use.
18. Click Apply to see the change in the petal.
19. Notice the blue short line with squares on each end. This line indicates the Stitch Angle of the design.
20. Left click and drag one of the squares to change the angle of the pattern.
21. To see the change, either right click and choose Stitch It!, click Apply on the Embroidery Settings menu or click Stitch It  on the Editing toolbar.
22. Click on another petal, and change the fill pattern following steps 14 thru 18. Also, change the angle to your liking.
23. Continue changing all five petals of the flower.
24. Click Fit to Screen .



You are ready to stitch out your design.

25. Click Transmit to machine .
26. Choose either Send design or Send block – and begin embroidering your design. Please consult pages 34 – 35 of your Futura Embroidery Software User's Manual – found under Help, Open the Manual... for more information on sending the design.